

The Cornerstone

Volume 33, Issue 8

November 19, 2024



Letter From the Historian

Welcome to Elections!

The time has arrived! In today's meeting, we will be voting for the next semester's officers and advisors. Note that this meeting may take a while (historically 2-3 hours is not out of the ordinary), so settle in, relax, and be ready to cast your vote! It is essential that you stay for the whole meeting so we can maintain the quorum to elect the new officers. To ensure your vote, **make sure that you have signed in at tbpmig.org/signin.**

Additionally, please consider running for an officer position! You can either nominate yourself for any position you are interested in, or you can nominate someone else for whatever position they may be (or may not be) interested in.

The following page will have a brief description of the officer roles, so please check it out while you read the rest of the Cornerstone. There are a lot of different roles up for election tonight, so every vote counts! This edition of The Cornerstone also has some extra puzzles for your leisure while you vote. Be sure to check them out!

- Arthur Yang, A Detroit Lions Die Hard Fan (Big clue for one of the puzzles)

In This Issue

- Letter from the Historian
- Elections
- Officer Roles
- One Minute Reads
- The Best Puzzles

Meeting Agenda

- Announcements & Reminders
- Elections Procedure
- Proposed Bylaw Amendments
- Elections

Upcoming Events

- Knitwits IV: 11/20, 6:00 - 8:00 P.M.
- Buffalo Wild Wings Night II: 10/21, 6:00 - 8:00 P.M.
- Cantina Night II: 10/22, 6:00 - 8:00 P.M.
- TailgateBPV - Northwestern: 10/23, 12:30 - 2:00 P.M.

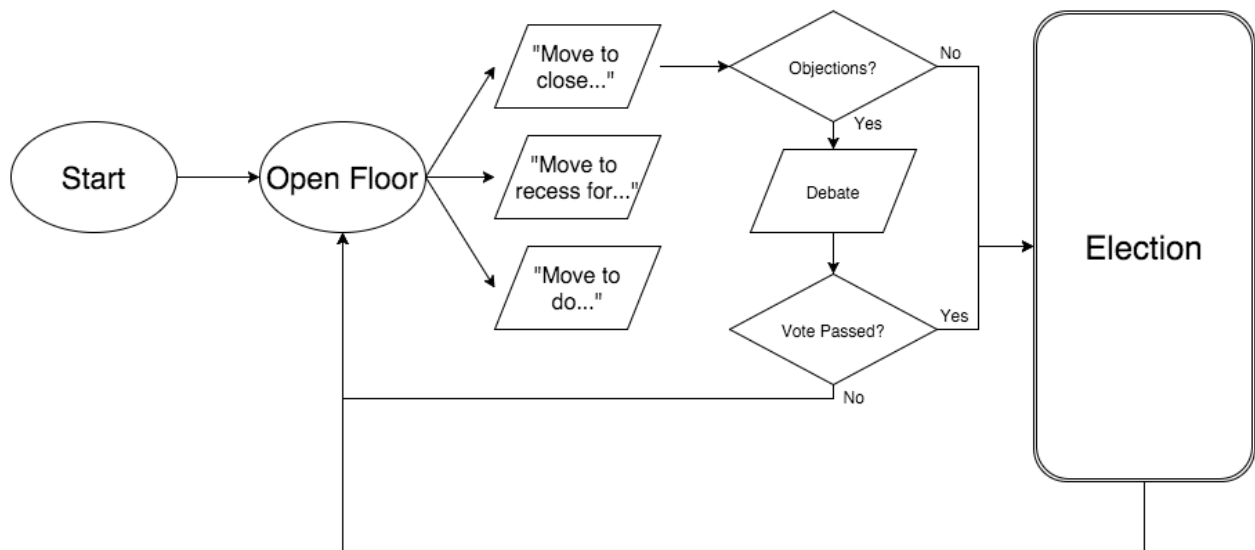
Officer Roles

The following roles are up for election:

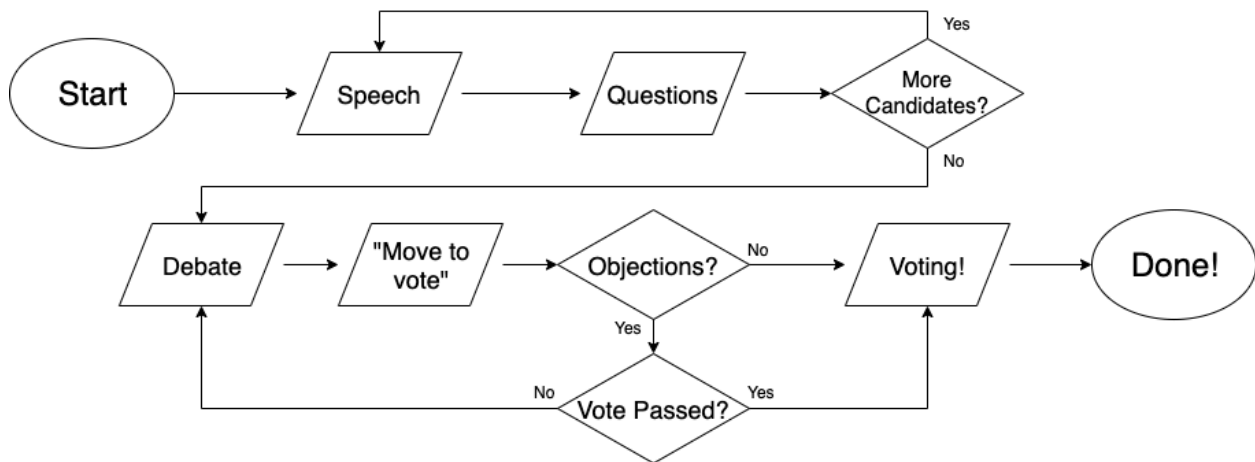
- **President:** The President's primary jobs are to supervise the other officers and to plan and conduct all officer, advisory board, and general meetings. The President is the facilitator; experience as a Tau Beta Pi officer is strongly recommended. The President also acts as the representative of the society in correspondence with other organizations (including serving as the official UMEC representative). The President gets to interact with many people on different levels. In addition the President is instrumental in setting the vision and goals of the chapter.
- **Vice President:** The Vice-President oversees the electee process and acts as second-in-command to the President. The VP gets to know the electees better than anyone else. Knowledge of the electee process and internal workings of TBP is a big plus, and organizational and people skills are a must. The VP gets to meet and work with many new students.
- **Graduate Student Vice President:** The Graduate Student Vice President runs the electee process for graduate students and organizes all graduate socials. This position is typically filled by a graduate student member.
- **Service Coordinator:** The Service Coordinator is in charge of overseeing all service projects done by the Chapter. They must communicate with the many project leaders to ensure the success of the events. The Service Coordinator should have an outstanding interest in community service and great organizational skills.
- **Activities Officer:** The Activities Officer is responsible for the Chapters social events, including intersociety events, and the Initiation Banquet. This position is great for outgoing and creative personalities.
- **Campus Outreach Officer:** The Campus Outreach Officer is in charge of Chapter efforts related to outreach on campus. This consists largely of tutoring, but new outreach programs that utilize our resources are also encouraged. The position requires interest in expanding and improving our academic presence on campus.
- **Chapter Development Officer:** The Chapter Development Officer is responsible for identifying, developing, and implementing new ideas and improvements in almost any area of the Chapter. They help the Executive Committee with turning feedback and ideas into actionable items. The Chapter Development Officer oversees New Initiative meetings which serve as a forum for Chapter members to discuss ideas, suggestions, and concerns. This position requires initiative and creative thinking, and is perfect for someone who has a desire to impact the Chapter. Access to a car is helpful, and familiarity with chapter operations is a big plus.
- **Membership Officer:** The membership chair is the counterpart to the VP for active members. Organizational skills are a must. This officer also is responsible for logistics for chapter general meetings. Access to a car is very valuable (borrow one or own one).
- **Publicity Officer:** The Publicity officer is in charge of making sure everything TBP does is publicized to the appropriate audience.
- **Historian:** The Historian is in charge of chapter publications including the Cornerstone, Alumni Newsletter, and website publications. The Historian is in charge of picture taking for the Chapter Survey and maintains chapter records, such as member demographics, as needed.
- **Advisor:** Advisors are responsible for supporting and mentoring student HQ / chapters, serving as a "leadership of last resort" to provide guidance when needed. Advisors also act as a liaison between the chapter and district, informing officers about available resources and advocating for student perspectives to various administrations.

For more information, see the officer position descriptions on the website under **For Members → Elections**.

Flow of Elections



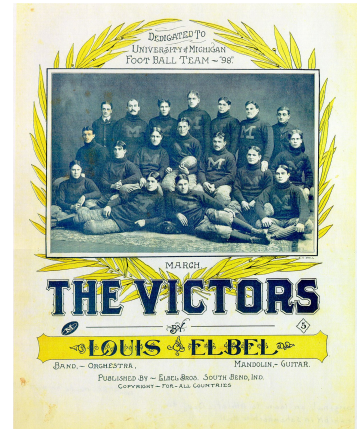
Position-Specific Flow



One Minute Reads

"The Victors" is the fight song of the University of Michigan. Michigan student Louis Elbel wrote the song in 1898 after the football team's victory over the University of Chicago, which clinched an undefeated season and the Western Conference championship.

An abbreviated version of the song, based on its final refrain, is played at University of Michigan sporting events and functions. "The Victors" is considered one of the greatest college fight songs ever written.



The Best Puzzles

		6	8		3	7		
							6	5
	8		9			4	1	
	7					3		
9		4	5	3	7	2		1
		8					4	
	1	3			2		7	
8	2							
		5	1		8	6		

	×		+		+		+		122
+		+		+		-		÷	
	-		+		+		-		30
-		+		-		+		-	
	×		+		÷		-		311
-		-		+		×		-	
	-	9	×		-		-		-57
-		+		×		÷		×	
	+		+		-		+	15	74
-35		47		135		24		-175	

A	B	C	D	E	F	G	H	I	J	K	L	M	N	O	P	Q	R	S	T	U	V	W	X	Y	Z
	6														16				10			11			

Figure 1 displays a 10x10 grid of 100 horizontal bars, each representing a day in the 2009-2010 season. The bars are labeled with day numbers (1 to 100) and a letter (W, T, B, P) indicating the day type. The letters are placed above the bars. The grid shows a repeating pattern of day types across the season.

R Z T R T T R B T C L Q N S O
 A P S F X R O N B K U E E A E
 O F R F P N E W L P U R H C T
 P O T U R D D A U L V I M T N
 H J V D I G V B S I N D S I E
 Y C I S A R L D C U G R J V M
 B M E C M I E E N V R B R I P
 J R S E C R E T A R Y E U T O
 P N O I I C X F P Y A A R I L
 W C T S M X Q V I A H S E E E
 S Y N A I R O T S I H B G S V
 W C Z W W V F U P B Z C D H E
 A W O U V L D U X U E S S O D
 S U P M A C G A K T S U K A X
 M E M B E R S H I P J I A D O

Activities

Chapter

Membership

Secretary

Advisor

Development

President

Service

Campus

Historian

Publicity

Treasurer

3 ÷	1 -	3 -		7 +	30 ×
		5 ×			
15 ×	18 ×			2 ÷	
	90 ×	11 +			3 +
3 -			12 ×		
	1 -			9 +	

6 ×	4 -	9 +		5 -	
			6 ×	9 +	
13 +				2 ÷	10 ×
24 ×		5 ×	12 ×		
10 ×				2 ÷	
12 ×			12 +		