



The Cornerstone

Volume 20, Issue 1

January 9th, 2018



Inside this Issue:

Letter from the Editor	1
Exemplary Character	2
Fun Facts	2

Agenda:

Officer Updates
Good Interviewing Practices
Guest Speaker:
Prof Schwank

Upcoming Events:

First General (01/16)
IM Soccer (01/18)
MathWorks (01/22)
FEV Consulting (01/24)
Engineering Games (01/26)

Letter from the Editor

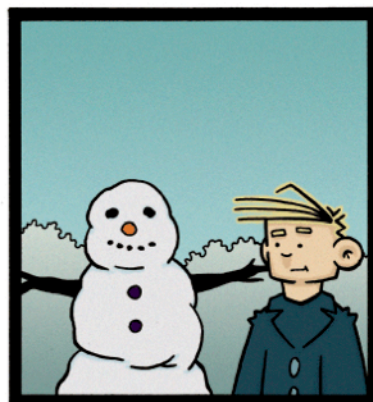
Hello Tau Bates!!

I don't know about you guys, but I thoroughly enjoyed the 12 days between the final exam day and the first day of this semester. I was able to catch up on some much needed sleep and some great shows. (Anyone a fan of Black Mirror?)

Well, now that it's a new semester, we have brand new, shiny officers. I, Mitch, will be serving as the historian this semester. I'll do my best to bring you an interesting and useful Cornerstone and revive the alumni newsletter. If you are feeling creative and would like to contribute a piece of literature (article, drawing, or other) to The Cornerstone, please feel free to email me at tbp.historian@umich.edu and try to include it in the next issue.

I hope everyone is as excited as I am for this new semester. I'm sure we will have a blast at service projects and social events. Best of luck with you new classes (and professors).

Sincerely,
Mitch Coon



WWW.PEANIZLES.COM



© DON MATHIAS

Definition of Exemplary Character

In order that there may be a more uniform basis for selection of members for Tau Beta Pi, these suggestions are offered. It is expected that a copy of this statement be given each active member before every election, and it may at times serve as a general expression of our policy in the selection of members.

It is the purpose of the Society to mark in a fitting manner those who have conferred honor upon their alma mater by distinguished scholarship and exemplary character as students, or by their attainments as alumni.

Distinguished scholarship, while the primary requisite for admission, must not be considered the sole criterion.

After the scholastic requirements have been fulfilled, the selection shall be based on integrity, breadth of interest both inside and outside of engineering, adaptability, and unselfish activity.

We consider that true integrity is the sine qua non for membership in Tau Beta Pi, that it transcends in importance scholarship, activity, and every other qualification. Without private and public integrity, we believe that no organization is worthy of existence. Under integrity, we include honor and high standards of truth and justice.

Breadth of interest sufficient for eligibility in this Association will enable people to maintain their positions in their community by the exercise of qualities other than engineering ability.

True engineers must be able to adapt themselves ingeniously to all circumstances and conditions, making them conform to the desired purpose.

The rating of people on the degree of unselfish activity manifested, is intended to indicate that Tau Beta Pi believes that none can become worthy engineers without the welfare of associates, organizations, and the community at heart. It is further- more expected that they display willingness to aid and assist in worthy causes by their actual campus record. However, the fact that people may not have shown unselfish activity to an appreciable degree throughout their courses of study is no infallible indication that they would not if the opportunity offered. The most conspicuous illustrations of this are those students who are self supporting, for which due allowance must be made and due credit given. In fine, it is in this capacity for the unstinted giving of their best, without thought of remuneration, that we believe lies one of the most sensitive tests for determining candidates' rights to bear the name and wear the Bent of Tau Beta Pi.

Fun Facts about January 9th

- 475 - Byzantine Emperor Zeno fled Constantinople due to a family coup.
 - 1296 - Earl Floris V, Count of Holland, signed accord with Philip IV, King of France.
-