

The Cornerstone

Volume 34, Issue 7

March 25, 2025



Tau Beta Pi
The Engineering Honor Society

Letter From the Historian

Welcome Back Electees!

We're getting pretty close to our final general meeting and elections so, as always, make sure you're up to date and on track to finishing your electing requirements (you can check them on the website at **For Members** → **Track My Progress**). Also, April 8th will be TBP Elections so if you have any officer positions you're interested in, I highly recommend you run for it and get involved. During the meeting there will also be a brief introduction into each role.

For today's electee team activity, we will be watching each of your team's slideshow presentations. At the end, every electee will vote for a presentation and the top teams will get electee team points!

I'm wishing you all the best of luck and look forward to seeing your hilarious slideshows.

Big news, filling out the Cornerstone Contribution form will get you 0.5 whole service hours (can be done only once per meeting) and it takes way less than that amount of time, if you have any questions, just let me know!

-Sincerely, Jimmy Samson

In This Issue

- Letter from the Historian
- Fourth General
- Big News
- TBPuzzles

Meeting Agenda

- Announcements
- Officer Updates
- Slideshow Presentations

Upcoming Events

- MindSET 3 Prep:
3/26, 6:00PM-7:00PM
- Knitwits II:
3/27, 4:30PM-6:00PM
- Engineering Futures:
3/27, 6:00PM-7:30PM
- High School Musical
Movie Night:
3/27, 7:30PM-9:30PM
- Engineering Scavenger
Hunt:
3/28, 1:30PM-4:00PM
- Cantina Night:
3/28, 6:00PM-8:00PM

TBPhun Facts (Michigan Edition)

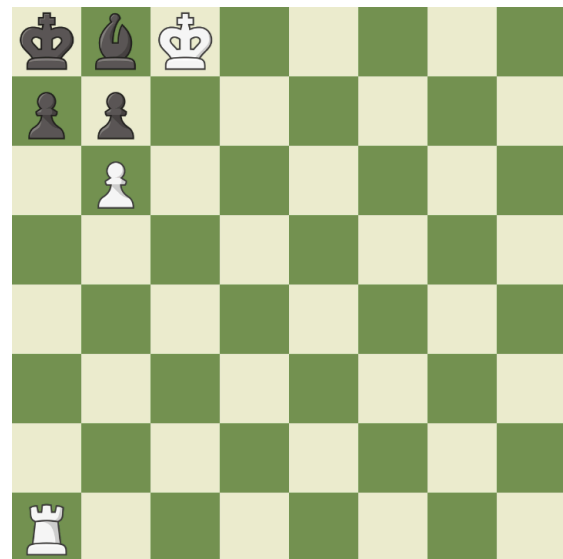
- ❖ Michigan has more lighthouses than any other state, with 129 standing along the Great Lakes shoreline.
- ❖ The state is home to the first paved road in the U.S., which was built in Detroit in 1909 on Woodward Avenue.
- ❖ Michigan's Upper Peninsula was nearly its own state called "Superior" after Michigan lost the Toledo Strip to Ohio in the 1835 Toledo War. Instead, it was given to Michigan as compensation.
- ❖ Michigan became a state in 1837. Before that, it was part of the Northwest Territory and later the Michigan Territory, which originally included parts of what are now Wisconsin, Minnesota, and even the Dakotas.

The Best Puzzles



Can you find checkmate for white in 4 moves?

		5		3			9
	4		2	5	7		
1						7	5
				9			8
2			1		5		6
3				8			
6		7					1
			6	7	9		8
5			8			4	



Can you find checkmate for white in 2 moves?

		1				4	2
					6	9	8
			7				
	2		3	1			
4			5		9		2
				8	2		5
					7		
9		8	2				
	3	6				1	

	×		-		10
×		+		-	
1	-		×		-44
-		÷		-	
	×		-	4	17
-5		11		-3	

	-	1	+		8
-		+		+	
8	×		+		33
÷		×		-	
	-		-		-7
0		16		10	

Fill in the missing numbers

- The missing values are the whole numbers between 1 and 9.
- Each number is only used once.

N N C H A Y Q N U R L T G U C
 Y F P R L M O D O C M L G R T
 G T U K H S G V P I L G E N D
 Y S D G I V A T L S E R E N E
 Z V E A R E V E R B E R A T E
 Y T I N D M C K F M S G A U W
 S L C N S A P N O I S U L L I
 B D E N S I T G N N K C B H A
 B I H C I A B T X I G G W T N
 D L A Q E T W L H M L K O T A
 Z D E B U G S E E A J J O I N
 E M L N F S J I G L O T C R A
 T F K S D E V L D B C A K I B
 Q X D B S H D T K N U C L F C
 N A V S B V Z Y R X I T W X A

Banana Blend Cascade Endeavor Illusion Indistinct Liaison
 Minimal Reverberate Sensible Serene Syzygy Tact

Fill out the Cornerstone Contribution form at tbpmig.org/cornerstonecontribution for up to 0.5 credit hours per contribution (can only be filled out once per individual meeting).