
The Cornerstone

Volume 30, Issue 4

February 14, 2023



Letter From the Historian

Hello fellow Tau Beta Pi Actives!

Welcome back to Actives meetings! Although we do not meet as often, I would suggest staying up to TBP by also attending New Initiatives meetings or General Meetings, and of course volunteering as much as possible!

With midterms coming up next week, I wish you good luck, and you could also help other students with this by volunteering for tutoring! There is currently a shortage of tutors for our tutoring program, so if you have time available, I would suggest signing up!

In this meeting, we will be voting on new amendments to the TBP constitution, and our approval for new electees to join the chapter.

First, two motions have been passed to amend the national TBP constitution:

- Make the Director of the District Program an official period, which has been a trial position for 6 years.
- Allow the trustee and the Trust Advisory Committee to invest in Private Equity Funds as another option for investments of the unused funds for the national chapter.

Note that because we need a time period after this announcement, these will not be voted on yet, instead this will be voted on during Third Actives. For our approval of new electees, the Eligibility Code for new members is on the next page.

Best,

Alex de la Iglesia

In This Issue

- Letter from the Historian
- Second Actives
- Upcoming Events
- Eligibility Code
- TBP: The Best Puzzles

First Actives Agenda

- Announcements
- Officer Updates
- Voting for Amendments
- Electee Character Evaluation

Upcoming Events

- Knitwits: 2/14 8pm – 9:30pm
- NROTC Group Tutoring: 2/15 5pm – 9pm
- BWW Social: 2/16 5pm – 7pm
- UM Science Olympiad Volunteering: 2/18 7:30am – 8pm
- MindSET Water Bottle Rockets: 2/19 1pm – 4pm
- Midterm Study Hall: 2/19 8pm – 10pm
- Third General: 2/21 6:30pm – 7:30pm
- Spring Break: 2/27 to 3/3

Eligibility Code for new Members

In order that there may be a more uniform basis for selection of members for Tau Beta Pi, these suggestions are offered. It is expected that a copy of this statement be given each active member before every election, and it may at times serve as a general expression of our policy in the selection of members.

It is the purpose of the Society to mark in a fitting manner those who have conferred honor upon their alma mater by distinguished scholarship and exemplary character as students, or by their attainments as alumni. Distinguished scholarship, while the primary requisite for admission, must not be considered the sole criterion. After the scholastic requirements have been fulfilled, the selection shall be based on integrity, breadth of interest both inside and outside of engineering, adaptability, and unselfish activity.

We consider that true integrity is the sine qua non for membership in Tau Beta Pi, that it transcends in importance scholarship, activity, and every other qualification. Without private and public integrity, we believe that no organization is worthy of existence. Under integrity, we include honor and high standards of truth and justice.

Breadth of interest sufficient for eligibility in this Association will enable people to maintain their positions in their community by the exercise of qualities other than engineering ability.

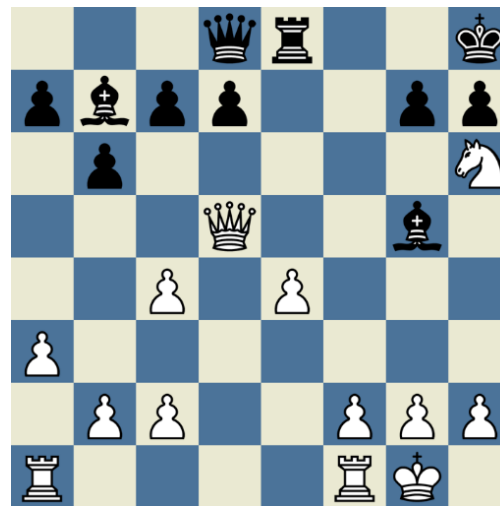
True engineers must be able to adapt themselves ingeniously to all circumstances and conditions, making them conform to the desired purpose. The rating of people on the degree of unselfish activity manifested, is intended to indicate that Tau Beta Pi believes that none can become worthy engineers without the welfare of associates, organizations, and the community at heart. It is furthermore expected that they display willingness to aid and assist in worthy causes by their actual campus record.

However, the fact that people may not have shown unselfish activity to an appreciable degree throughout their courses of study is no infallible indication that they would not if the opportunity offered. The most conspicuous illustrations of this are those students who are self supporting, for which due allowance must be made and due credit given.

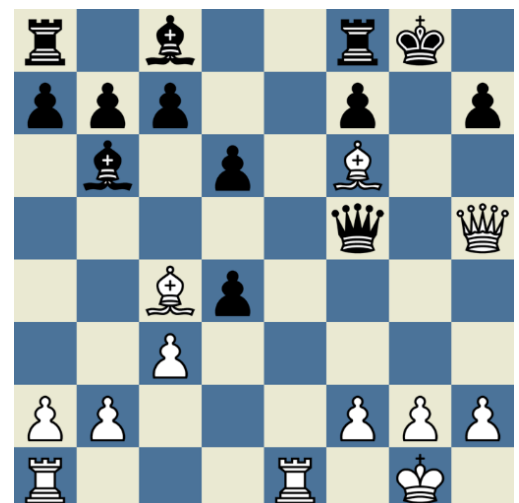
In fine, it is in this capacity for the unstinted giving of their best, without thought of remuneration, that we believe lies one of the most sensitive tests for determining candidates' rights to bear the name and wear the Bent of Tau Beta Pi.

TBP: The Best Puzzles

	2	4						
3			2					8
			1	3		2	7	4
8			4			3		1
	4						9	
5		2			9			6
6	5	9		2	3			
2				4				9
						5	6	



Can you find white's mate in 2?



Chess 1: Queen to G8 for check, black rook takes G8, white knight to F7 for checkmate!
 Chess 2: Queen to F7 for check, black rook takes F7, white rook to E8 for checkmate!

	1		7			6	8	
				1		9	5	3
		6			4			1
		4		9			2	
	3						4	
	8			7		3		
7			3			5		
5	6	3		8				
	9	1			2		3	