

The Cornerstone

**Tau Beta Pi
Michigan Gamma**

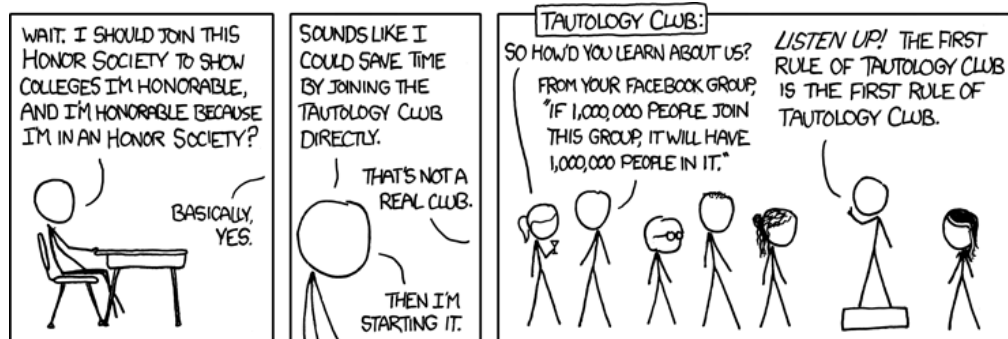
Volume 9, Issue 2
January 17, 2012

To Be Done: The Tau Beta Pi Challenge

By Daniel Becker

First off, congratulations! To be here, you must be awesome. Let us recognize that fact. You are awesome, and by getting to this point you have proven that you are extremely intelligent, or at the very least extremely clever. The GPA cutoffs were 3.748 for juniors, 3.723 for seniors, and 8.081 for graduate students (yeah grad GPAS are weird).

However, let's not stop there. Here's an example of what happens when you do stop there:



See that? That's no good. TBP is not some misguided acronym for the Tautology Club, nor do we want it to be.

By performing exceptionally well in your academics, you have been given the chance to join TBP. Now, you have to earn it. You have a sheet in your packet (or, at the very least, you should and if you don't Heads Will Roll) that tells you all of the crazy things you have to do this semester. Hours of service work. Multiple meetings. More than one social event! Seems pretty tough.

Well, to some extent it is. We do require a lot of work, because we do want a strong membership. We want members to show that they can take on the impossible workloads, demanding classes, and sleepless nights of the University of Michigan College of Engineering and then go on to do more than that. We want to honor you because you have proven yourself honorable through hard work and dedication.

Inside this issue:

To Be Done: The Tau Beta Pi Challenge (cont'd) 2

Welcome to First Comity 2

Celebrity/Officer Gossip: Kristin Graf Were-Squirrel 3

Comic of the Week 4

Research as a Biomedical Engineer 5

YouTube Video of the Week: Extreme Sheep LED Art 5

Puzzles 6

Upcoming Events:

- Teach For America Booth—1/18, 1/19
- Detroit Pen Pals—1/18
- New Initiatives I—1/19
- Engineering Call Outs—1/23, 1/24

More information online at <http://tinyurl.com/7bjlpo>
Please sign up online.



To Be Done: The Tau Beta Pi Challenge (cont'd)

But now this sounds pretty scary. Sure, you must be somewhat of a masochist because you went for engineering in the first place, but isn't this a bit far? You only came for the free food, and the officers are taking way too much time talking and not nearly enough time feeding you delicious NYPD. Honor is great and all, but you're really hungry and you have a bunch of homework due tomorrow.

Well, the good news is that we've been there too, and when we made the requirements we thought about all of that. Sure, it doesn't seem like much fun to get up early on a Saturday to chop down trees in the Arb. But then you get there, and everyone's complaining about lack of sleep and homework, and suddenly it's fun. Suddenly you have friends from different majors, from different worldviews, from different ways of life but you're all having fun together and now it doesn't seem like such a bad idea to get up early and chop down trees in the Arb.

And hey, social events are pretty much just excuses to play games and eat food without paying for it.

So, are you in? The requirements aren't trivial, but they are fun. And at the end of the day, you'll find yourself surrounded by a group of friends, networking contacts, and partners that will stick with you for as long as you'll stick with them.

And, of course, delicious free food. ◇

First Comity

By Justine Kunz

Welcome to First Comity! We are glad that you have joined us tonight to learn more about Tau Beta Pi. We are a national honors fraternity seeking to acknowledge the outstanding academic achievements of engineering students. By being here you have already demonstrated a great deal of academic merit. Congratulations!

The purpose of our organization goes past simply acknowledging outstanding achievers. Members of TBP are active in both the Ann Arbor community and the University of Michigan community. We provide opportunities to link our members with top-tier professionals in industry and academia, providing invaluable knowledge and experience.

Michigan Gamma prides itself on being one of the most active chapters of Tau Beta Pi in the nation. We organize a number of events like peer tutoring, the Engineering Book Swap, and co-sponsor the annual Career Fair with the Society of Women Engineers. But it is not all work and no play here! Our social events include intramural sports teams, game nights, and intersociety Rock 'n Bowls.

As you read this you are probably rolling your eyes and thinking, "I have heard all of this already! What is the purpose of this strange publication?" Well, the Cornerstone exists to give members of Tau Beta Pi an outlet to express themselves. We publish YOUR articles, be it comedic, satirical, or serious, and you get a service hour for each article you write! That seems like a win, win, win to me. ◇



Celebrity/Officer Gossip

Kristin Graf Were-Squirrel

By Justine Kunz

15 January 2012

BULLPEN—Over the weekend I received a tip from my confidential informant that described the secret life of TBP's own Vice President, Kristin Graf. It seems that Kristin has been leading this double life for some time now without our knowledge! It turns out that Kristin is not completely human and is actually a were-squirrel.

Were-squirrel (def.) a human with the ability to shape shift into a squirrel or an anthropomorphic squirrel-like creature

If you do not believe me then scroll over the picture on her Officer Bio on the TBP website and you will see her in her full squirrel form.



This furry little friend splits her time between foraging for acorns and being the Vice President of TBP. If she isn't in the Bullpen, expect her to be running around the forest, enjoying the freedom of the North Campus forest.

Kristin has decided to come forth and explain her story in an exclusive interview with the Cornerstone.

Cornerstone: So, we understand that you have a very special ability, can you explain it to us a little better?

Kristin: Yes, it is very special indeed. I am a were-squirrel, which means that I can shift into a squirrel upon will. Unlike werewolves, were-squirrels are not dangerous to humans and only threaten the acorn population. Luckily, I can control my ability and I am able to shift at will, not only during a full moon.

Cornerstone: Now that your secret has been exposed, do you feel threatened by potential researchers?

Kristin: No, as a biomedical engineer, I understand that research is very important. I do not know many other were-squirrels and I would like to learn more about my condition. I am more afraid of squirrel hunters. In my squirrel form I have very few defenses, and so I have tried to stay in safe areas without hunters like the North Campus forest and the Nichols Arboretum.

Cornerstone: Do you ever associate with the squirrels in the Diag?

Kristin: Definitely not! Those squirrels are fat and lazy, gathering food primarily from gracious humans. They are extremely territorial and caddy. They give the wild squirrels a bad name.

Cornerstone: Is there anything we should know about were-squirrels in general?

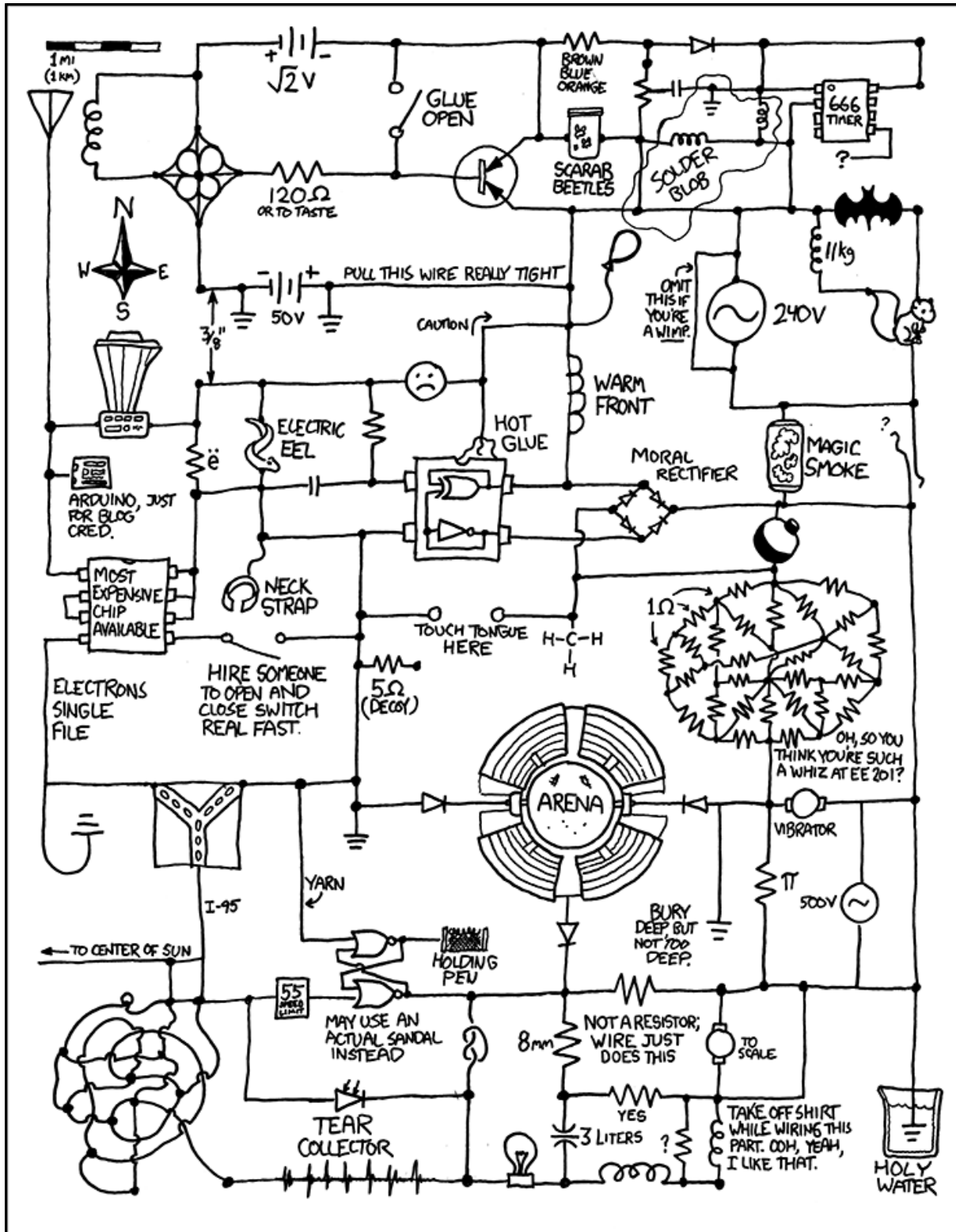
Kristin: We were-squirrels just want to forage for nuts, run around heavily wooded areas, and climb trees. I want everyone to know that we are normal people with special abilities. We are not weird, just different. Since we are no threat to humans, we are not to be feared! Did I hear someone say peanuts? ◇



Comic of the Week

Submitted by Sam Dettling

Circuit Diagram aka Why Electrical Engineers Are Insane



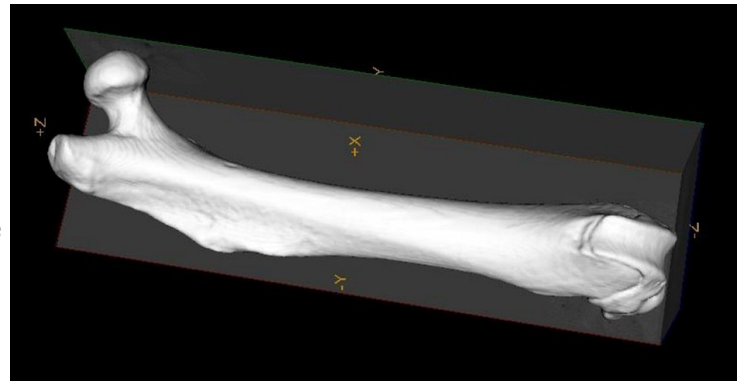


Research as a Biomedical Engineer

By Kristin Graf

Although I know Justine was having a lot of fun writing the entire Cornerstone by herself, I decided to write a mini article.

The research I'm involved in looks at the effects of different glycemc indices and fat compositions on rat bones. After spending almost a whole semester dissecting rat femurs, we took CT scans of the femurs, and now I get to analyze those scans. ◇



This is a picture of one of the CT scans . Yay!

YouTube Video of the Week

Extreme Sheep LED Art



Watch these amazing sheep on the hills of Whales create a huge LED display of sorts.



Puzzles of the Week

Sudoku

Instructions: Fill in with the numbers 1-9. Each row, column and group of squares enclosed by the bold lines, must contain each number only once.

	5	7						8
						6		
			1	7	9	5	2	
8		4		9	1			
		5		8		9		
			5	2		4		6
	7	6	9	3	4			
		3						
9						2	3	

6				4		7		1
							8	
					5	8		2
	8					6	9	
	5	8					6	
2		3	9					
	1							
3		7		1				9